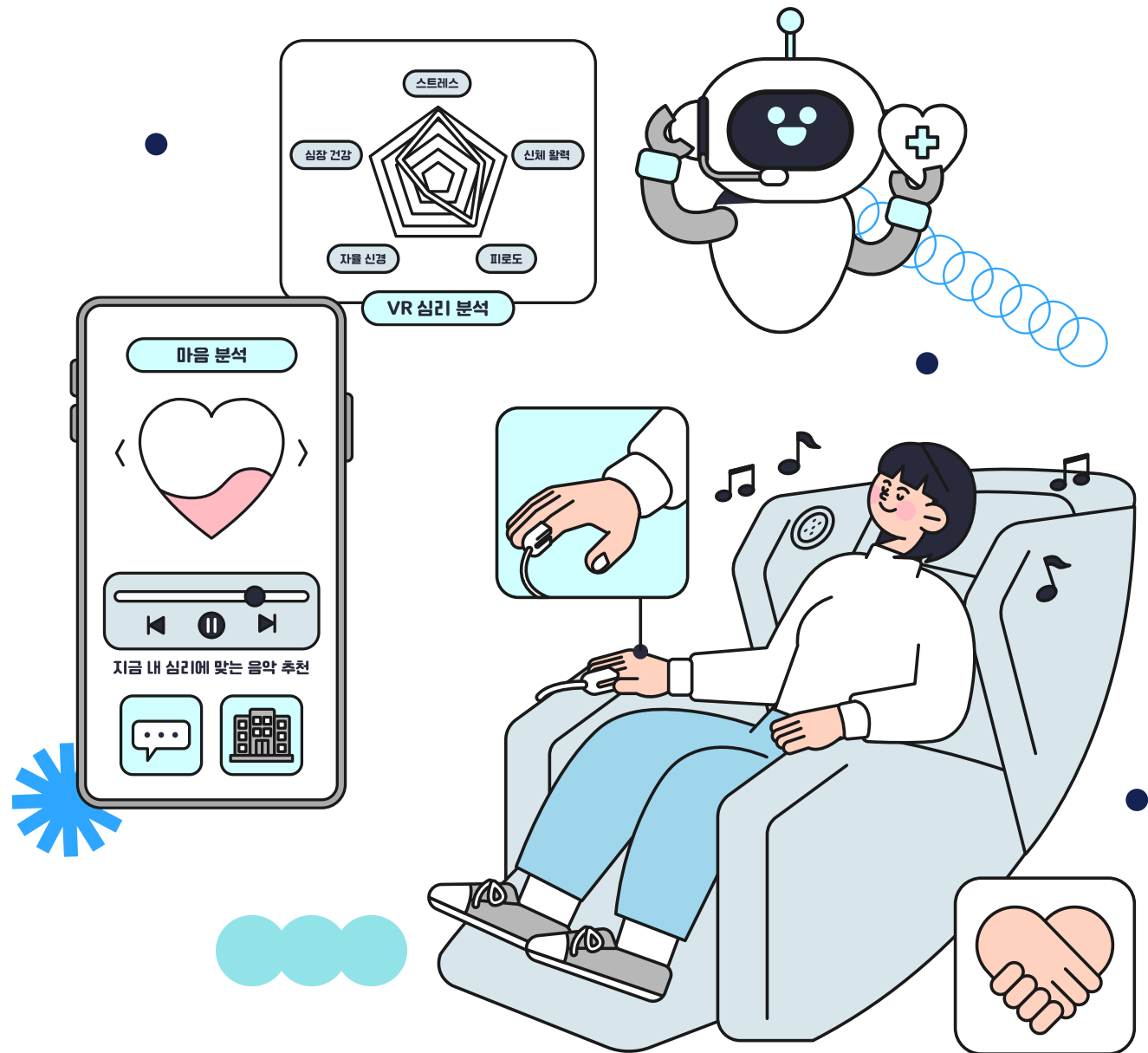


AI Mind care

WWW.NEXV.CO.KR

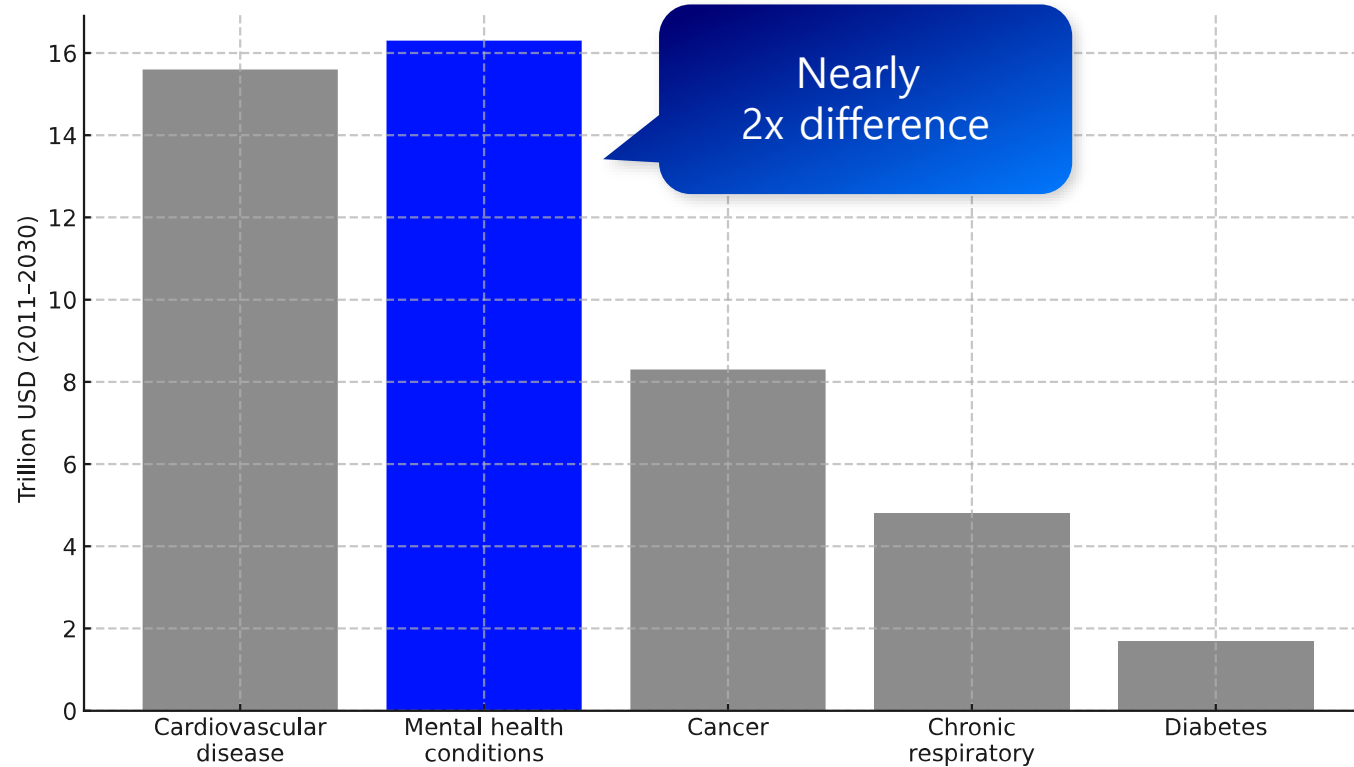




Mental health: Costlier than Cancer



Global Economic Burden of Non-Communicable Diseases



Projected Cumulative Economic Loss by NCDs (2010–2030)
Cardiovascular Disease > Mental Health Conditions (\$16T) > Cancer > Chronic Respiratory Disease > Diabetes

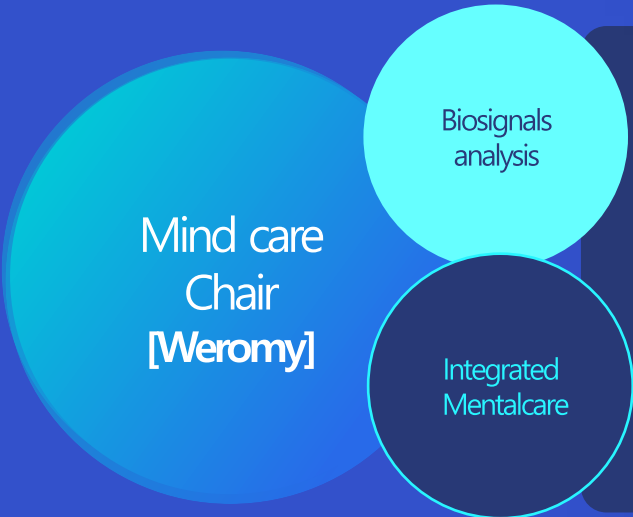
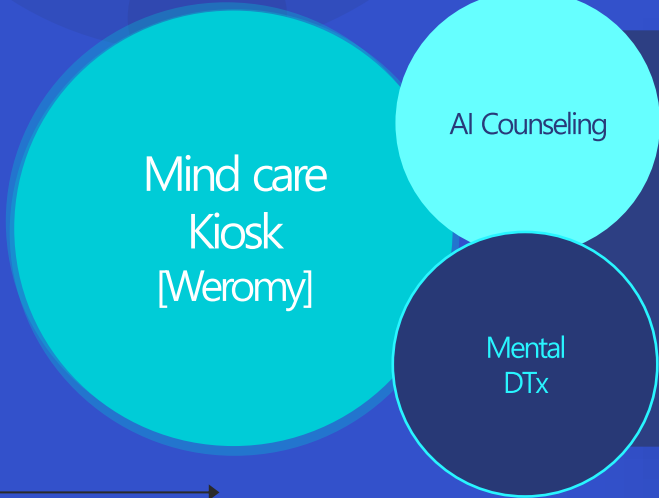
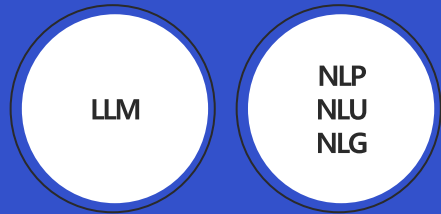
* Source: WEF & Harvard School of Public Health (2011-2030 cumulative estimates)

Tech

Item

Images of Product

Advantages & Competitive of product

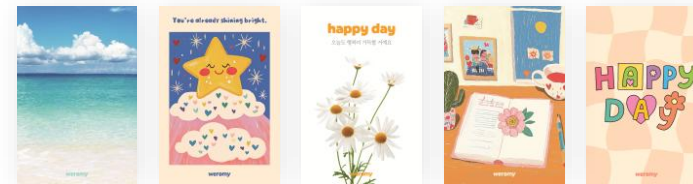
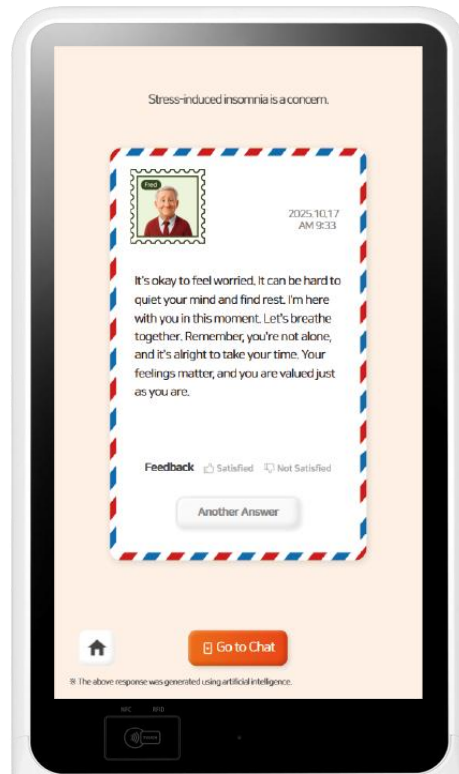


- ✓ Mental health of Digital treatment (ADHD, INSOMNIA, Patient for Dementia DTx)
- ✓ Medical Consultation, Monitoring Patients Status, Managing lifestyles
- ✓ Multilingual Support, Voice Recognition
- ✓ An AI kiosk that listens to your concerns and provides advice.



- ✓ Mental Health Management System through Biosignals Analysis
- ✓ Emotion Analysis using User's Voice, Conversation Content, and Facial Expression
- ✓ Providing Advice/Suggestions Helpful for the User's Emotions and Concerns
- ✓ Providing Advice/Suggestions Helpful for the User's Emotions and Concerns

Weromy (Letter box of AI counseling kiosk)



Design postcards in various styles



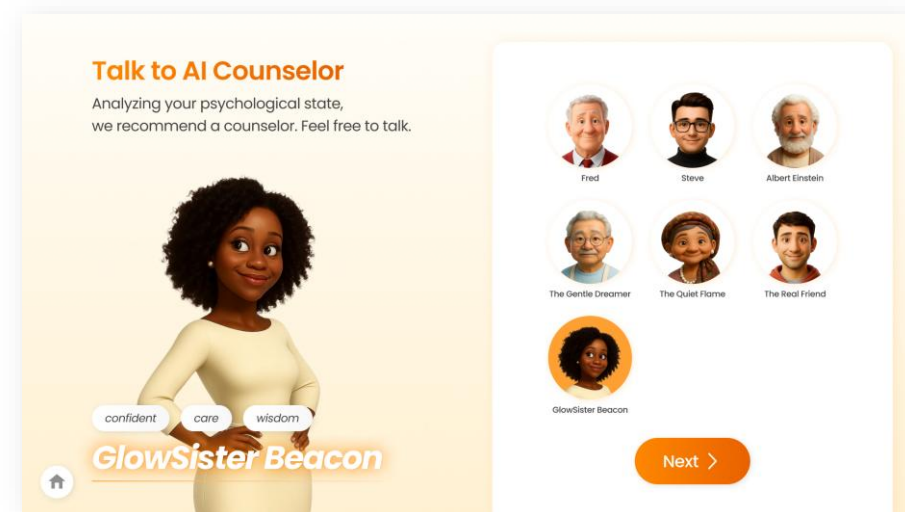
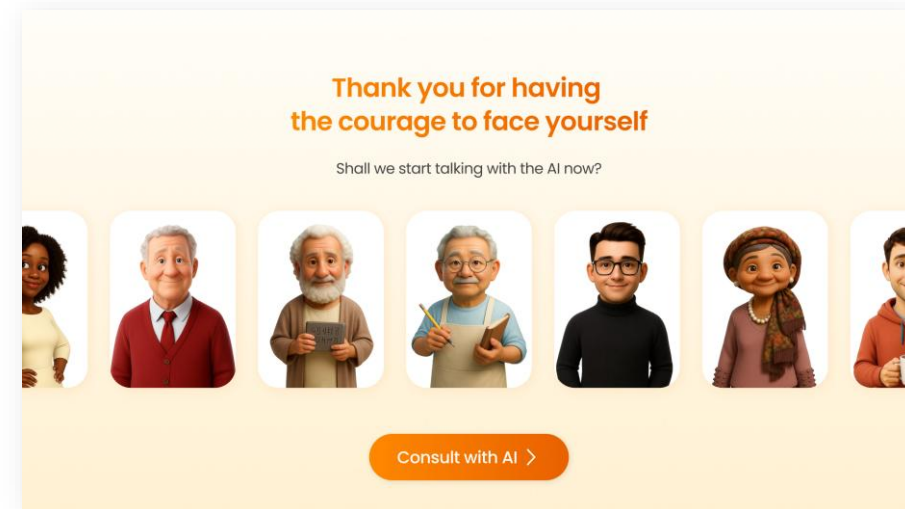
Weromy (Persona characters)



- Persona characters reflecting cultural characteristics for English speakers

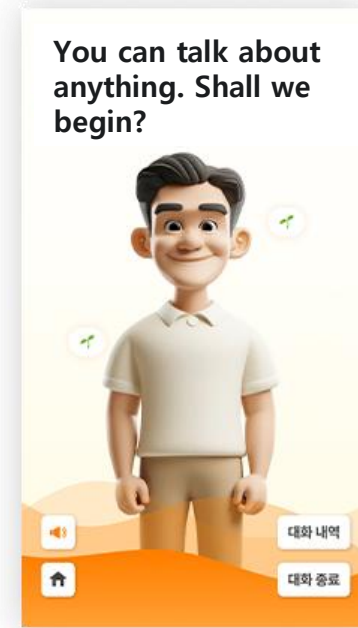
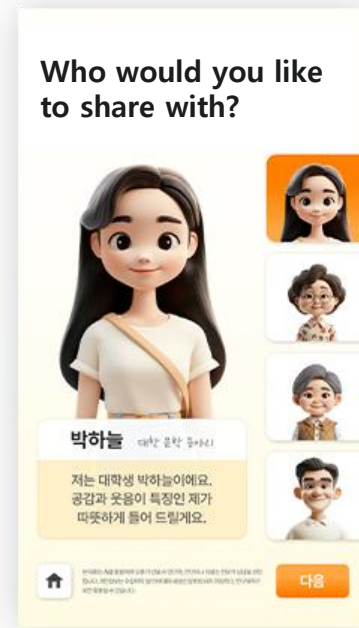
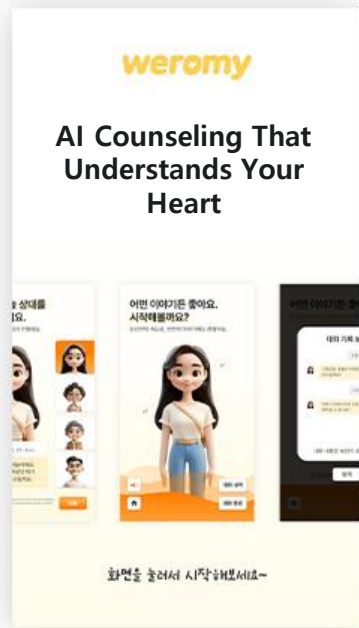
A blend of Zendaya, Fred Rogers, Albert Einstein, Steve Jobs, Quiet Flame, Gentle Dreamer, Real Friend

We collaborated with SUNY to develop content based on the DSM-5 diagnostic criteria and tailored it to the English-speaking culture, completing pilot studies with both on-campus and international students.





Weromy (Character ver) Launched a version for digital accessibility



When you need to share what's on your mind,
a heart-to-heart chat with an AI character is just a call away.



Weromy (Mentalcare chair)



AI Convergence Mental Care Chair Integrated with specialized mental health content including AI counseling, non-contact bio-signal analysis (rPPG), and EEG technology. AI creates a customized meditation after consultation.



Result Report

HRV
Normal → Above Normal

Relaxation
High → Very High

EEG Brainwave
The current EEG pattern shows a dominance of theta waves (56%), indicating a relaxed brain state. Alpha waves are present at a moderate level, suggesting overall stability, while low beta activity implies a comfortable state of immersion rather than intense concentration.

AI Mental Health Diagnosis Analysis
Currently, your body and mind have high tension, requiring rest. Attention is needed for autonomic nervous system balance, and due to high anxiety and tension, focus on finding inner peace is necessary. Accumulated mental fatigue can also decrease brain activity.

For you
Anxiety is probably not a stranger to you who has worked hard. That anxiety is evidence that you have challenged yourself without stopping and gained numerous experiences, and it is a natural signal sent during your brain's process of growth and adaptation. When anxiety temporarily increases, adopt the self-perception that you are 'not stopped, but recovering. Rather than pushing yourself, it is important to positively affirm and accept anxiety as part of your experience and growth. Build strong mental health with sufficient rest and self-care.

Mission
Express the feelings you are currently experiencing with an emoji or word.

Scan the QR code to continue on mobile
Save your result or keep talking with AI

© Results may vary depending on your mental or physical condition at the time of measurement.

Healing Content for You

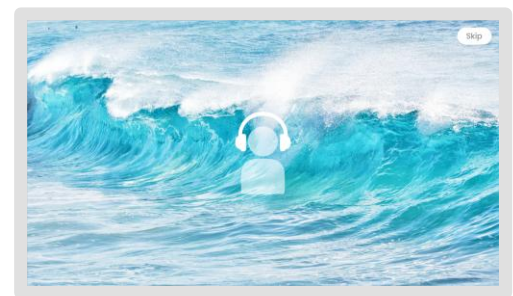
We recommend healing content based on your psychological state and your conversation with the AI counselor.

You can also choose a different style of counselor

#Relax
#Let Go Of Worry
#Emotional Release

Let It Flow

Next >





Weromy (Development)



A more popular desk version than the chair and a home care version for B2C are being developed by the end of this year - government project.



<Desk Version>



<Homecare Version>



Turing Test : AI's Counseling VS Human Counselor

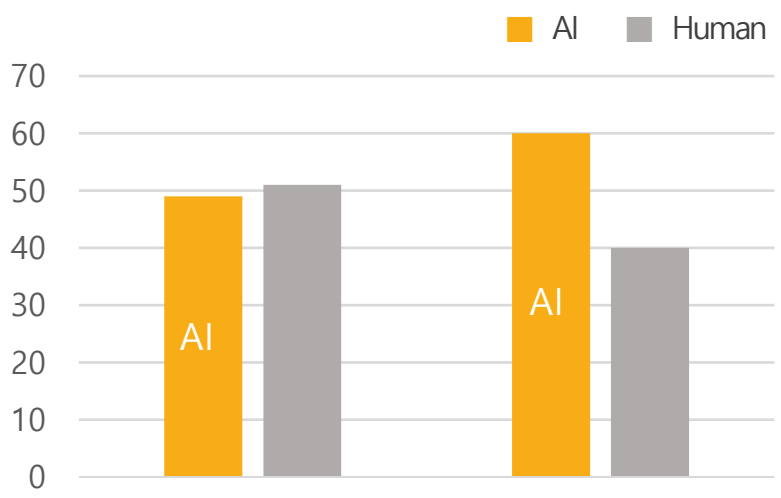


Through a group of professional psychological counselors' verification

AI counseling conversation effectiveness and satisfaction verification completed.

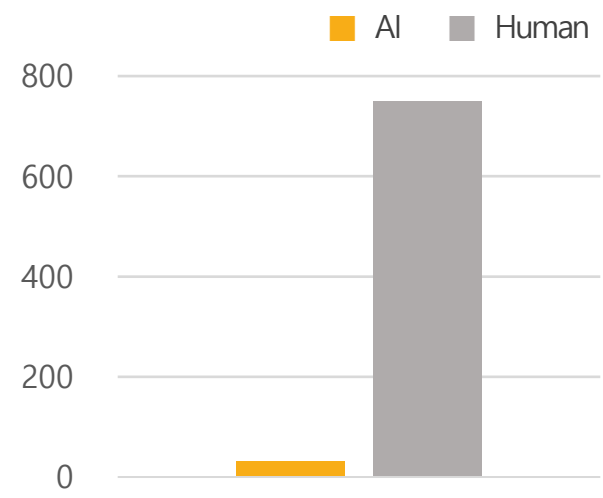


- Securing the quality and reliability of AI responses through a group of professional psychological counselors.
- A 49:51 ratio of response effectiveness compared to human counselors, nearly equal.
- For sensitive questions, AI responses are even more effective.



Answer accuracy similar

AI dominates answer preference



AI responds 25 times faster

The screenshot displays a detailed report comparing AI and human counselors across several metrics. It includes bar charts for accuracy and preference, a line chart for response time, and a donut chart for overall performance. The report is titled 'A(3가지) VS 심리상담사' and includes a 'Verified' seal.

In February 2024, the Turing Test was administered to 10 professional counselors at the District Youth Center.

Public institution introduction cases and major suppliers

Hyundai Mipo Dockyard, Lotte E&C, Yongsan-gu Office, Pyeongtaek Public Health Center, Songtan Public Health Center, Anjung Public Health Sub-center, Pyeongtaek City Hall, Wondong Elementary School, Gyeonggi Logistics High School, Seocho-gu Youth Counseling and Welfare Center, Pohang City Youth Counseling and Welfare Center, Gwangju Dong-gu Youth Counseling and Welfare Center, Ulsan Mental Health and Welfare Center, Bangbae Art Youth Center, Seocho Youth Center, Seocho Youth Center, Seocho Single-Person Household Support Center, Next-Generation Convergence Technology Research Institute, Busan National Science Museum, Gangnam-gu Office's 'Weather in My Heart' event, Kyobo Bookstore Kyobo Education event, Dobong-gu Career and Academic Advancement Fair, Gochang Education Support Center Jeonbuk Edutech event, Gyeongbuk Office of Education Digital Creative Convergence Education, Junglim Community Welfare Center, etc.



경지물류고등학교



포항시 청소년상담복지센터



평택시청



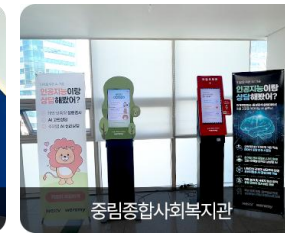
전북 에듀테크 박람회



캡스톤 디자인 및 시해커톤 경진대회



차세대융합기술연구원



충남종합사회복지관



종로구 JOB FAIR



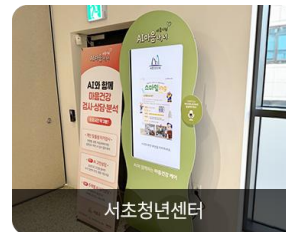
전주 원동초등학교



강남구청



송탄보건소



서초청년센터



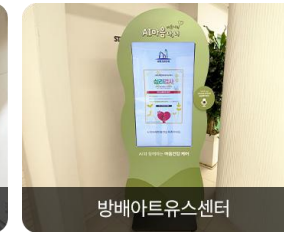
서초구 청소년상담복지센터



서초1인가구지원센터



서초유스센터(청소년시설)



방배아트유스센터



2024 서리풀페스티벌



안중보건지소



도봉구 교육지원과 진로진학박람회



그린컴퓨터아카데미 · 아트학원



국립부산과학관



구미코/경북교육청



교보교육재단 「2024 교육 심포지엄」

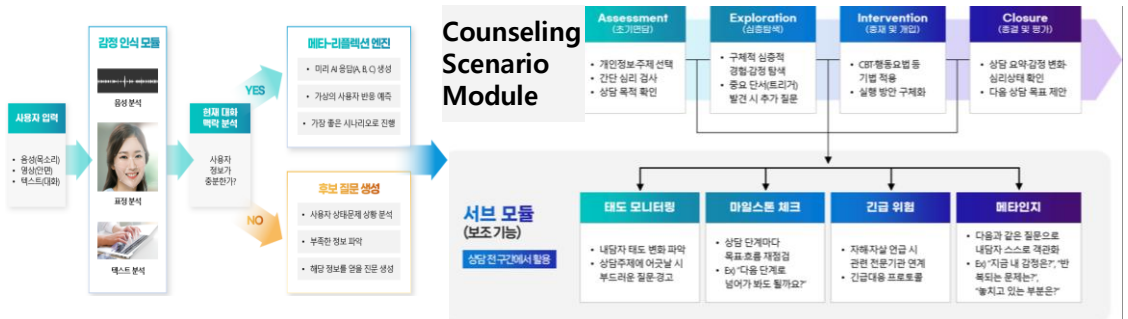


COMING SOON

Core Technologies



01 AI-Driven Goal-Oriented Counseling Module



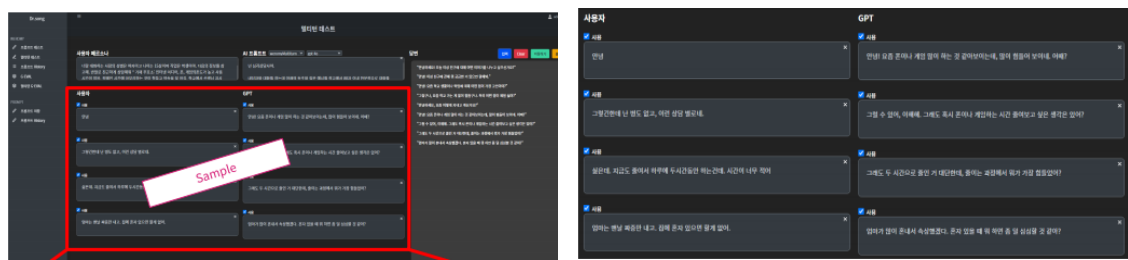
02 Context Analysis and Risk Monitoring

- Multi-layered control architecture for safely managing LLM.
- Analyzes context, monitors sincerity and risk level in every dialogue turn for counseling.



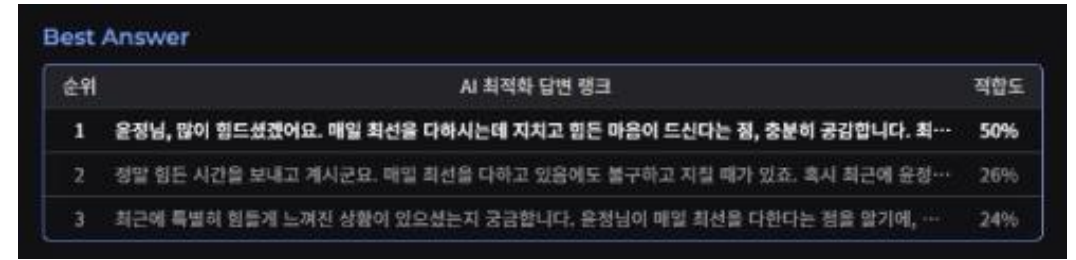
03 Long-Term Memory Multi-Turn Dialogue

- Implemented long-term memory-based multi-turn dialogue logic.
- Developed an internal tool for quality management.
- The tool tests multi-turn counseling conversations based on scenarios and specific topics.



04 AI Optimal Dialogue Deep Inference Module

- The AI hypothesizes the client's reaction to generate candidate next responses.
- Simulates the most effective progression path.
- Infers the optimal counseling flow.



Overview

User Profile

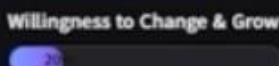
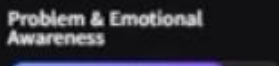
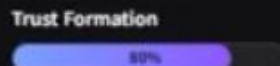
Name	Jane Park
Age	42
Gender	Female
Occupation	Middle School Teacher (English)
Mental Health Assessment Result	PHQ-9: Moderate to Severe De

Counseling Prompt

Persona
You are a warm, caring counselor who sincerely listens to the other person's concerns. Your role is to help them feel comfortable enough to share their true feelings.



Session Achievement



AI Mental Health Counselor

Last chat time: 5/20/2025 오전 10:31

Advanced Mode

Jane, thank you for sharing how you've been feeling—it's not easy to reach out when you're struggling. It sounds like things have been especially tough for you lately. Could you tell me about any specific situations or thoughts that have been weighing on you most?

lately, I've been feeling like I'm failing both at work and at home. I keep thinking I'm not doing enough for my students or my family, and that thought just won't go away

I'm really sorry you're experiencing that, Jane. Feeling like you're not doing enough can be incredibly heavy, especially when you care so deeply about both your students and your family. Those thoughts can be persistent and exhausting. Has something changed recently at work or home that made these feelings stronger, or has this been building up for a while?

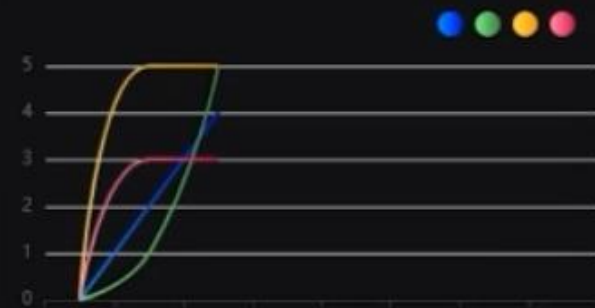
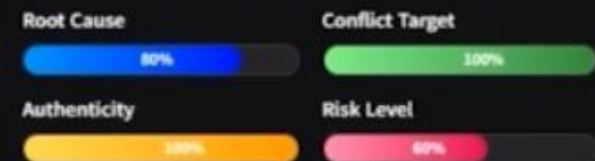
and I've been taking on extra responsibilities, which left me with little energy for anything else |

Send

Best Answer

Rank	AI-Optimized Answer Rank	Relevance
1	I'm really sorry you're experiencing that, Jane. Feeling like you're not doing enough can be I...	63%
2	It sounds so challenging to carry that weight, Jane. Your dedication to both your family and ...	26%
3	Have these feelings been gradually increasing for a while, or did something specific happen ...	11%

Psychological Insights



Key Differentiators

01 AI-Designed and Led Counseling Plan

- ① The issue of counseling leadership
- ② Difficulty in Monitoring Counseling Attitude
- ③ Limitations of Milestone-Based Progression
- ④ Vulnerability in Emergency Risk Detection
- ⑤ Lack of Metacognition for Each Stage of the Counseling Scenario

Evaluation and Validation

소용없는 상담 11월 9일
 별하나도 아까운 엽
 ☆☆☆☆☆
 나름의 용기와 갖은 애를 써서 상담을 했는데, 내가 한 말의 반복 +아 그렇군요. 아. 힘드시겠어요. 이게 다임. 기대를 한 내 잘못. 역시나 오히려 힘만 빠지고 더 공지로 물리는 느낌만 줌.

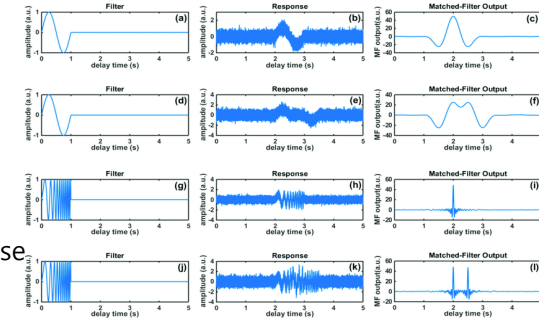
03 First Supplied to Demanding Public Institutions

- Following numerous tests and demonstrations,
- Supplied to public institutions (health centers, government offices, youth centers, schools, etc.) .



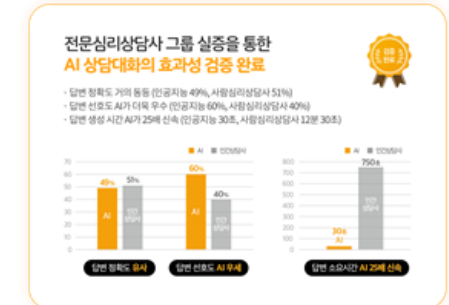
02 Deep Connection through Voice Conversation + Smartphone Linkage

- Moving beyond text, interactive counseling is available directly via voice for natural interaction.
- Achieves an excellent recognition rate even with surrounding noise or inaccurate pronunciation.
- This high recognition rate is enabled by a noise filtering and spelling correction engine.



04 Effectiveness Proven by Science

- Conducted researcher-led clinical trials.
- Turing Test validation performed on counseling dialogue between AI and human.

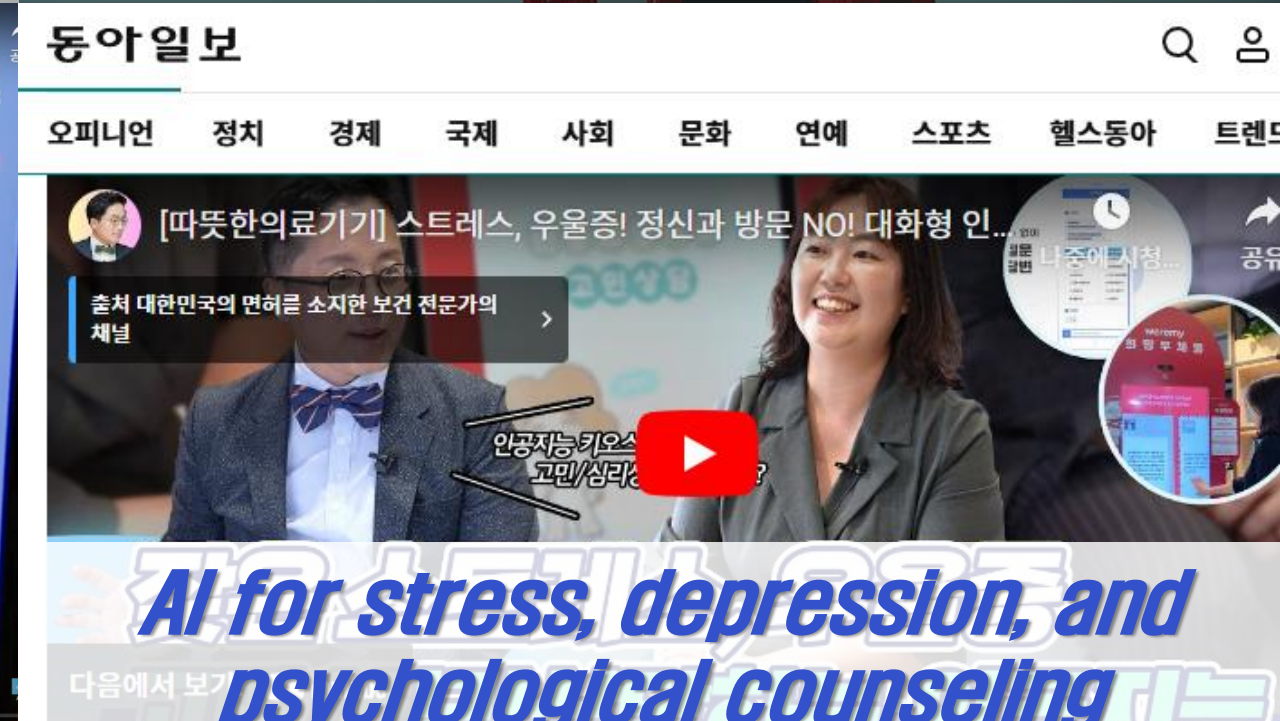
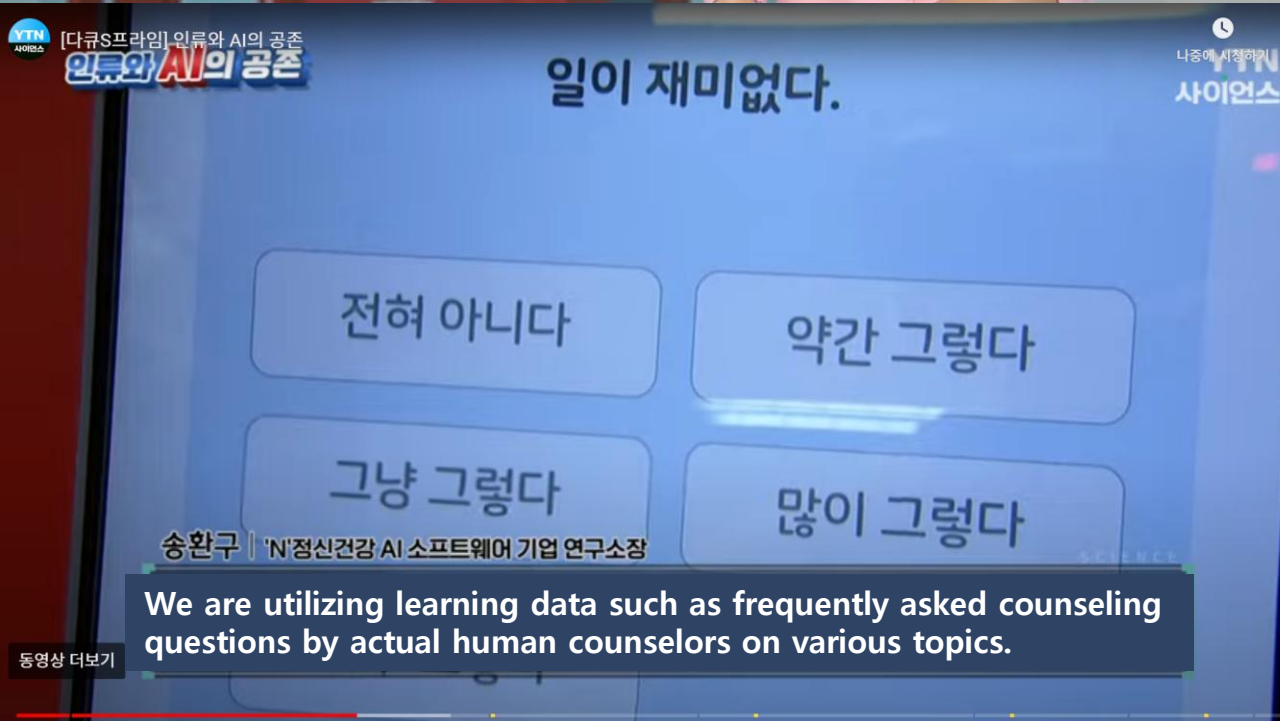




뉴스 START **Mental Counseling... AI in Everyday Life**



AI-powered psychological counseling is emerging as a viable alternative to difficult-to-reach psychiatric clinics.



Healthcare AI project experience, technology



NexV's "Weromy" Wins Presidential Citation at the 2025 SME Technology Management Innovation Competition

상담 문턱 ↓ 맞춤형 서비스로 사회적 가치 창출



Korea Rating & Data

I. 기술(신용)등급

(주)넥티승

발급번호: KED-2023-01-065607

I. 개요		투자용 기술등급			
기업명	(주)넥티승	<div style="text-align: center; font-size: 2em; font-weight: bold;">TI-3</div>			
대표자	윤한지				
사업자등록번호	815-86-00202			법인등록번호	110111-9340005
설립일	2016년 01월 07일			홈페이지	http://www.dongok.com/
기업규모	소기업			기업분류	일반법인
본사주소	(07802) 서울 강서구 공항대로 227, 504호, 505호 (아곡동, 다국선트 빌딩11)	평가일	2023년 11월 22일		
연락처	TEL 02-896-7000	재무기준일	2022년 12월 31일		
제출처	기타(참조용)				

II. 등급정보

투자용 기술등급	매우우량	우량	미흡	보통이하	보통	보통이상	양호	우수	매우우수	최우수
	TI-10	TI-9	TI-8	TI-7	TI-6	TI-5	TI-4	TI-3	TI-2	TI-1

III. 종합의견

(주)넥티승(이하 '회사')은 2016년 1월 설립된 비외국인기업으로, 광고 대행업 (주력사업) : 행정홍보, 마케팅 및 광고(대행) 등을 영위 하며, 2022년 12월말 현재 총자산 1,005백만원, 차기자는 29백만원(상당자산비율 200백만원), 평가기준일 현재 총당원 18명(기업부설연구소 6명 포함) 규모의 중소기업임.

회사의 핵심 기술은 대화형 의료 서비스 에이전트와 정신건강 상담 보조 디지털치료기기 개발 기술로, 자연어처리, 음성인식, 키오스크 기술을 활용하고, 우울증과 스트레스를 줄이는 것이 가능하며, AI 로봇을 통해 시간과 공간을 넘어 상담을 넘어 상담사의 역할(인사 상담, 관리를 대신함으로써 상담사의 피로도 감소 및 업무 효율성이 증대되고, 내담자는 시간과 공간에 제약 없이 상담을 받을 수 있어 저비용 형성(대량 대가 가능) 가능. 광성 변화 감지한 로봇을 통해 내담자의 상담 요청을 극대화하여, 로봇을 통해 상담을 권하여 상담을 지원하면서 비용 대비 효율성 향상이 가능한 기술임.

회사는 상담 RPA 모듈화를 통하여 AI 로봇 적용성을 향상시키기 위하여, 일반적인 5단계 상담 프로세스에서 AI 로봇을 보조 도구로 활용하고 상담자는 AI 로봇을 통해 상담 시간 외 언제라도 감성분석과 미션달성 등이 가능하도록 개발하는 등, 우수한 기술력과 성장잠재력이 양호한 시장을 바탕으로 미래성장잠재력이 우수한 수준임을 판단하여 기술등급은 TI-3 등급으로 평가함.



1 AI NLP technology

- '25: Awarded the Presidential Commendation at the SME Technology & Management Innovation Fair.
- '24 Army AI Competition Grand Prize Winner 'AI-Based Signal Intelligence Analysis'
- '22 Director's Award, NIKL AI Language Proficiency Contest
- Korea Rating Data investment technology grade TI-3 grade
- Text pre-processing and data processing using EDA and NLP of 3.3 million cases
- Deep learning AI technology that analyzes positive/negative predictions and sentiment using review contents, ratings, review types. And labeled labels

2 Healthcare AI project experience

- Contraceptive medication consultation data (10,000 cases)
- Processing and modeling of behavioral data based on wearable pet device sensors.
- Review data processing for patient experience evaluation AI solution development
- Building hair loss-related data for hair loss AI chatbot
- Delivery of skin knowledge and CBR model-based for patients
- Built a 100,000-case dataset for classifying and responding to youth counseling inquiries.
- Developed a health & exercise solution model utilizing fitness assessment data across the entire human lifespan.
- Developed an algorithm based on ECG data to predict arrhythmia and cardiac anomalies.
- Processed personalized lifestyle data for tinnitus treatment and developed a CBR algorithm.
- Building learning data for the production of medical consultation AI chatbots

Estimated Sales



Unit : 1,000 won

Business	Product	2024	2025	2026	2027	2028	2029	2030
Healthcare AI	AI Psychological Counseling	79,867	454,027	839,333	1,588,933	3,160,867	6,302,567	12,605,133
	Mental DTx	46,410	324,870	2,274,090	6,822,270	13,644,540	21,831,264	42,480,000
Marketing	Marketing	538,108	645,729	774,875	929,850	1,115,820	1,338,984	1,606,781
GovDev (Voucher ect)	DataVoucher AI Voucher Smart Service	500,000	500,000	500,000	500,000	500,000	500,000	500,000
Total		1,164,384	1,924,626	4,388,298	9,841,053	18,421,227	29,972,815	57,191,914

Future plan



21'~23'

Securing AI Source Technology & Data

- Crawling, analysis module
- learning data, existing medical contents (400,000 cases),
- Patent, AI source technology research and development



24~25'

AI chatbot Engine & B2G Reference

- Expanding to government offices and public healthcare institutions (100,000 usages)
- Conducting clinical trials of DTx and medical Hospital chatbots, various departments of solutions, and hospital references



26~27'

Device Expansion

- Device expansion into desk and home care versions
- Overseas expansion through multilingual development
- Expand sales through investment



28'~

DTx, Medical device (Level 2)

- Launched DTx and customized for each medical institution program production
- Medical device(Level2) registration
- Building English and multilingual datasets
- IPO and KOSDAQ listing



Strong Point

Our Strong Point

Rapid & Co-work



Rapid & Patent

With the creation of various ideas and patents for a little over five years AI business is growing rapidly (creating something out of nothing)



Step-by-step growth & revenue generation

1. Technology / business group / commercialization step by step, successful commercialization
2. Profits are being generated beyond the Death Valley (Death Valley) stage
3. We have our own R&D personnel and marketing and management support personnel



Cooperation & lots of experience

1. Cooperation and support through external networks (AI SW, medical institutions, universities, etc.)
2. Verification of technological prowess and feasibility by winning government R&D project orders, and practical experience in various artificial intelligence projects through government project AI and data vouchers
3. The CEO and the head of the research institute have been in business together for 15 years

NexV

Company

NexV

CEO

Hyun-ji, Yoon

Main Office

Magok Centrltower 504, 227,
Gonghang-daero, Gangseo-gu, Seoul,
Republic of Korea

Major Business

AI, SW, H-Marketing, e-Biz,
Intelligence, IoT...

Established

2016. 1. 7

Employees

Total 22 / R&D 8

Tel

+82. 02. 886. 7000

Website

<http://www.nexv.co.kr>

Healthcare AI "Next Value" NexV

